



# GAT MONTHLY MEMBERSHIP PROGRESS REPORT

Results as of: 12/31/2023

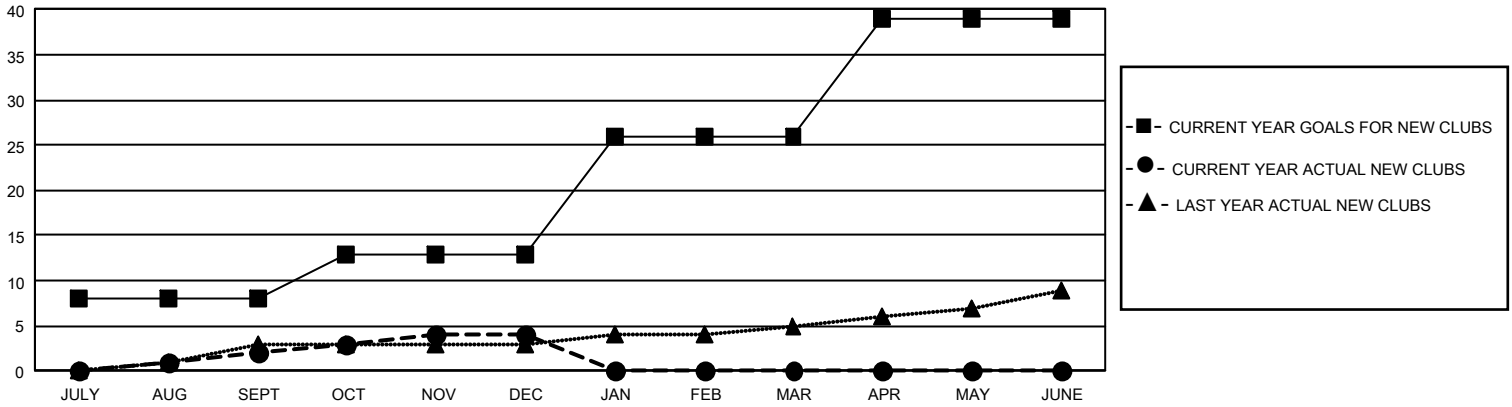
## GMT Constitutional Area 1, Group B

REPORT DOES NOT INCLUDE CLUBS IN UNDISTRICTED AREAS.

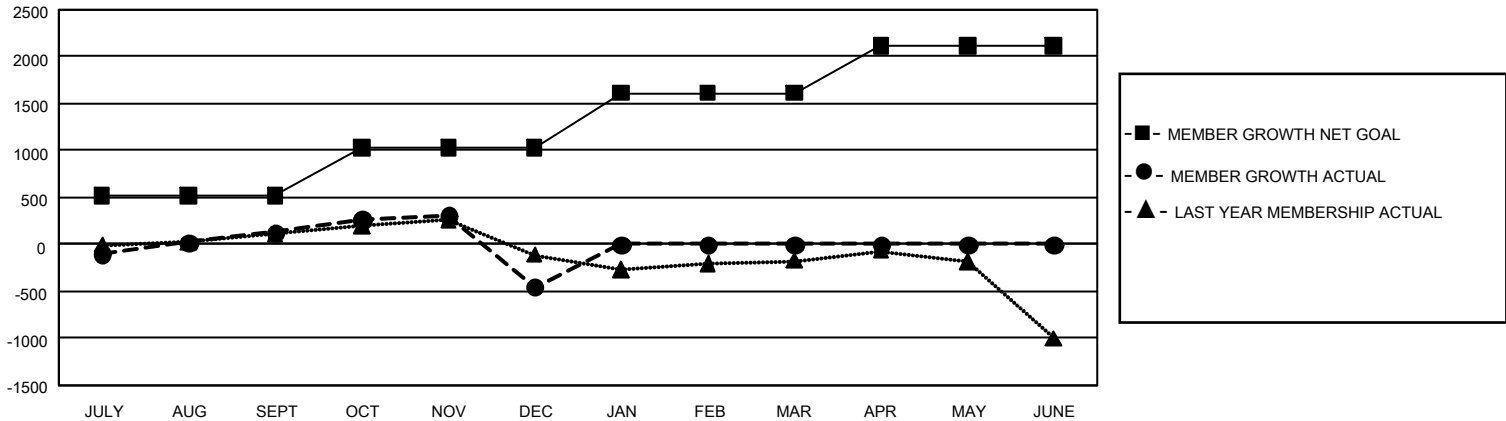
Clubs			
RESULTS FOR 2023-2024			
QUARTER	NEW CLUB GOAL	NEW CLUBS	DROPPED CLUBS
JULY/AUG/SEPT	24	2	5
OCT/NOV/DEC	15	2	26
JAN/FEB/MAR	39	0	0
APR/MAY/JUNE	39	0	0

Members			
RESULTS FOR 2023-2024			
QUARTER	MEMBER GROWTH NET GOAL	MEMBER GROWTH ACTUAL	DROPPED MEMBERS ACTUAL (including transfers)
JULY/AUG/SEPT	518	1,246	971
OCT/NOV/DEC	511	849	1,347
JAN/FEB/MAR	582	0	0
APR/MAY/JUNE	501	0	0

GOALS AND ACTUAL NEW CLUBS CUMULATIVE



GOALS AND ACTUAL MEMBERS CUMULATIVE



<b>DROPPED CLUBS: 31</b>	483 CLUBS OF 1,016 ADDED 1 OR MORE NEW MEMBERS	<b><u>GENDER DISTRIBUTION</u></b>	
		MALE 15,533 (58.09%) FEMALE 11,185 (41.83%) NON BINARY 2 (0.01%) PREFER NOT TO ANSWER 21 (0.08%)	
<b><u>DROPPED MEMBERS</u></b>		<a href="#">CLICK HERE FOR CUMULATIVE MEMBERSHIP DATA</a>	TOTAL FAMILY UNIT MEMBERS 5,378
DECEASED 197 CLUB CANCELLED 268 OTHER 1,855 <b>TOTAL 2,320</b>			FAMILY MEMBERS PAYING HALF DUES 2,835